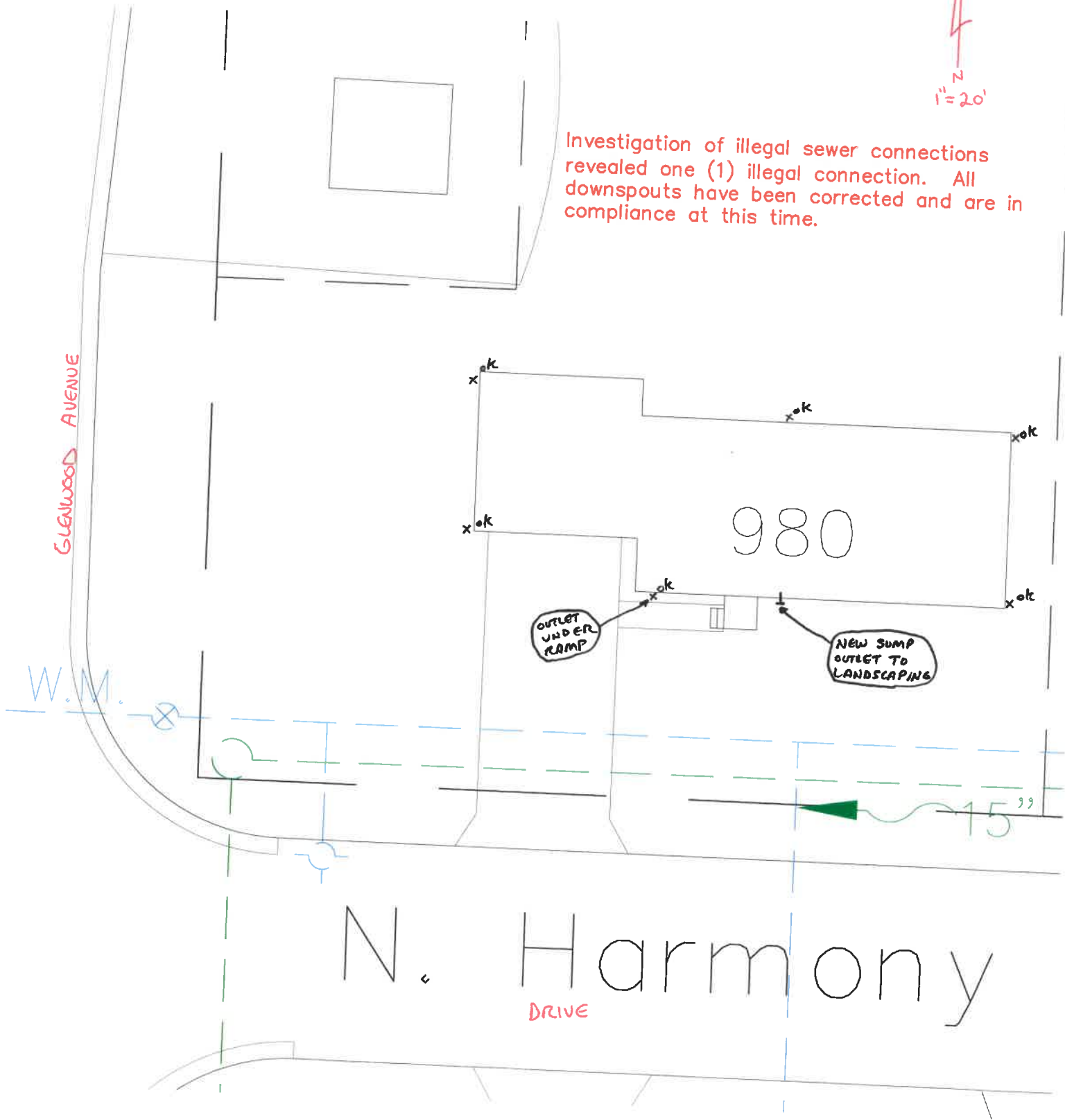


980 NORTH HARMONY DRIVE

2015



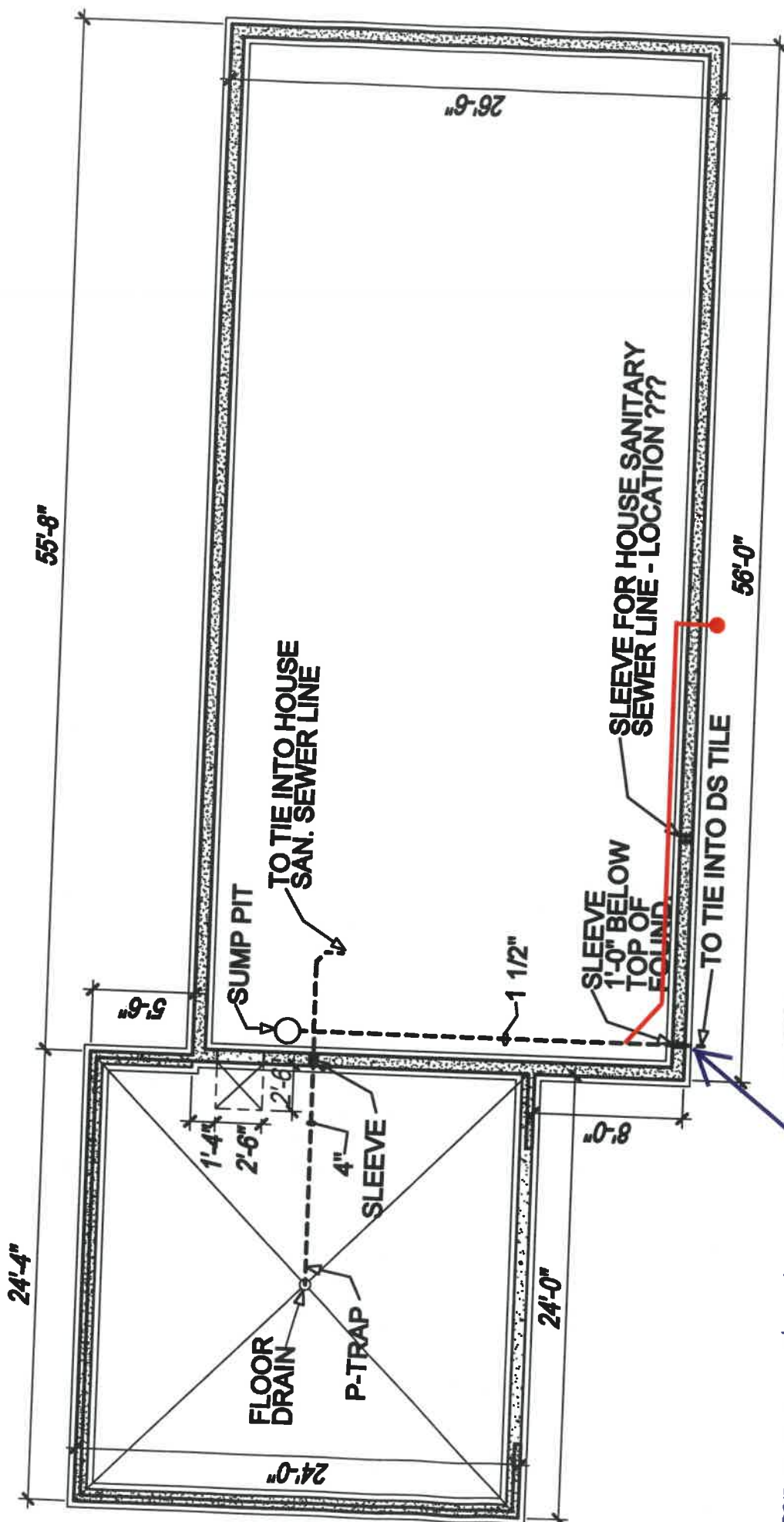
Investigation of illegal sewer connections revealed one (1) illegal connection. All downspouts have been corrected and are in compliance at this time.



SCANNED

03/11/2023

980 NORTH HARMONY DRIVE



SEWER LAYOUT

SCALE : 1/8" = 1'-0"

Sump pump outlet damaged by deck installation - rerouted as shown by red line to exterior, spills into landscaping to filter down to exterior footer tile



SCANNED

2011/11/10